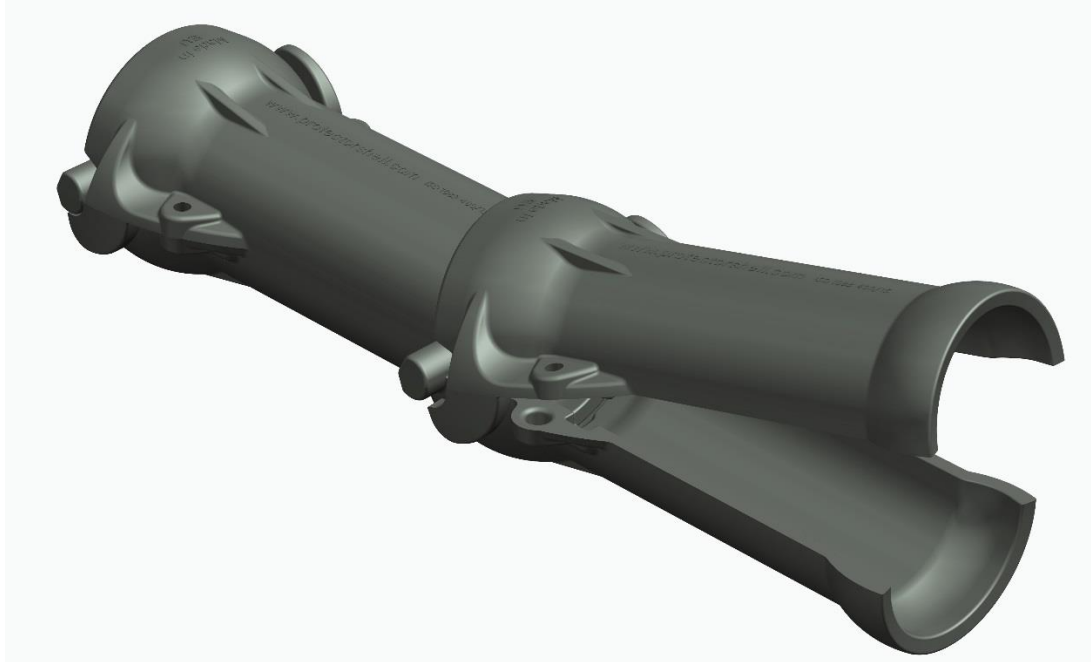


Protectorshell-SP (Single Part)

Traditional clip-together Protectorshell convenience in a single-part design to minimize inventory and simplify underwater laying in poor visibility, etc. The clean, robust design you have come to expect from Protectorshell with added convenience and simplicity.



PS170-SP/500/14 (Single Part)

Specifications	
Segment Length - Overall	574mm
Effective Installed Length/segment pair	500mm
Minimum Internal Diameter	170mm - for cables up to 156mm outside diameter
Nominal Outside Diameter	312mm
Wall Thickness (barrel)	13.6mm
Material	Ductile Iron to ISO 1083/AS1831/JS/400-15/S
Tensile Strength / Elongation	400MPa / 15%
Impact Resistance	≥7.5kJ
Minimum Bend Radius	4.0m Nom. / 3.3m Min
Weight per Segment	40kg nom.
Weight per installed metre (air)	80kg nom.
Weight per installed metre (water)	68kg nom.

Protectorshell SL

C Regata Cutty Sark No 21 4 IZ 15002 La Coruña, Spain
T: +34 8 8124 1115 F: +34 8 8192 4978

www.protectorshell.com

MS Diversified Services Pty Limited

PO Box 150 Maroubra NSW 2035 Australia
1135 Anzac Parade, Matraville, NSW 2036 Australia
T: +61 2 9694 1004 F: +61 2 9314 3526